

**Vacant**

**Not budgeted in  
13/14**

**New budgeted post in  
13/14**

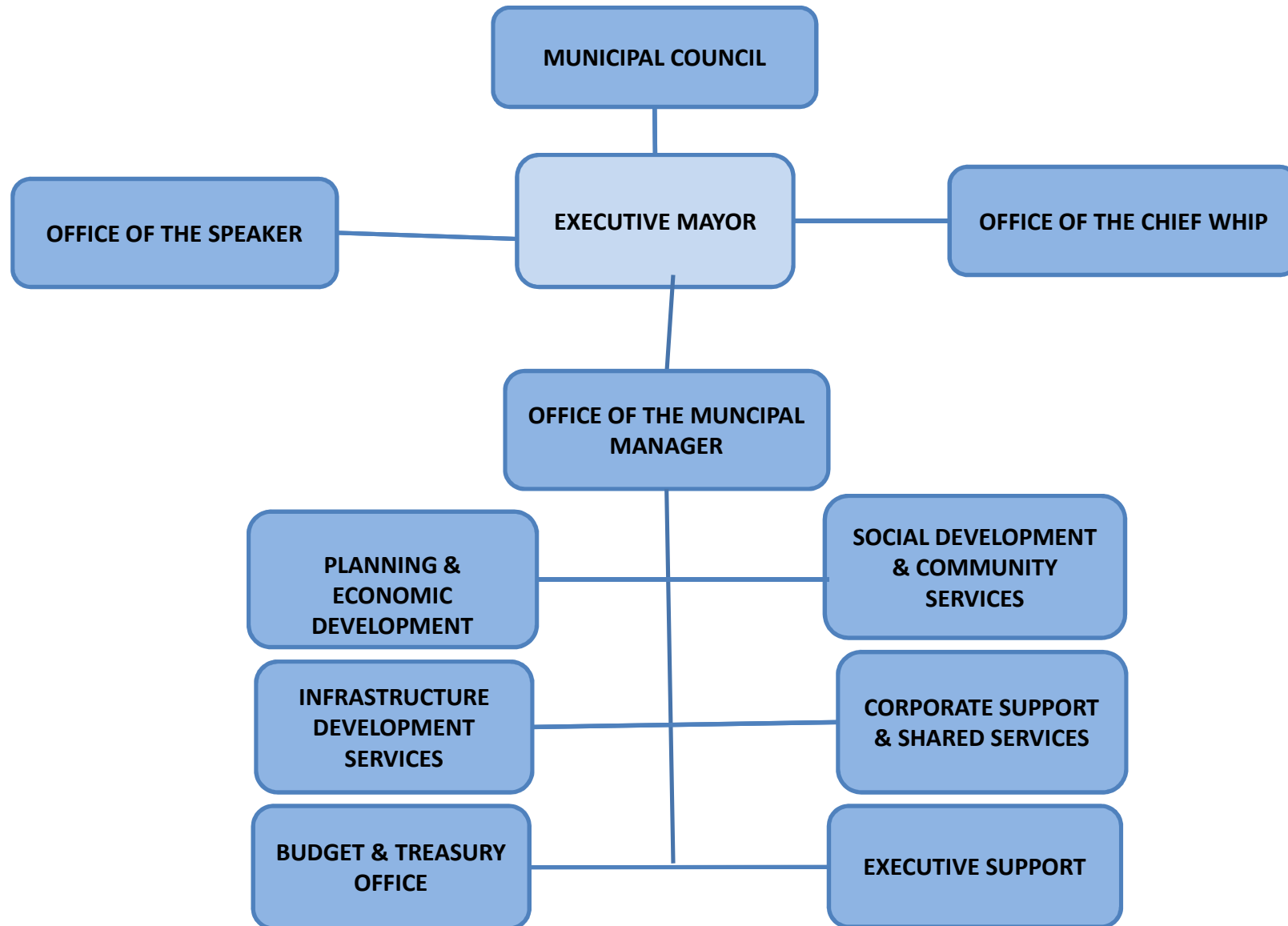


# **WATERBERG DISTRICT MUNICIPALITY**

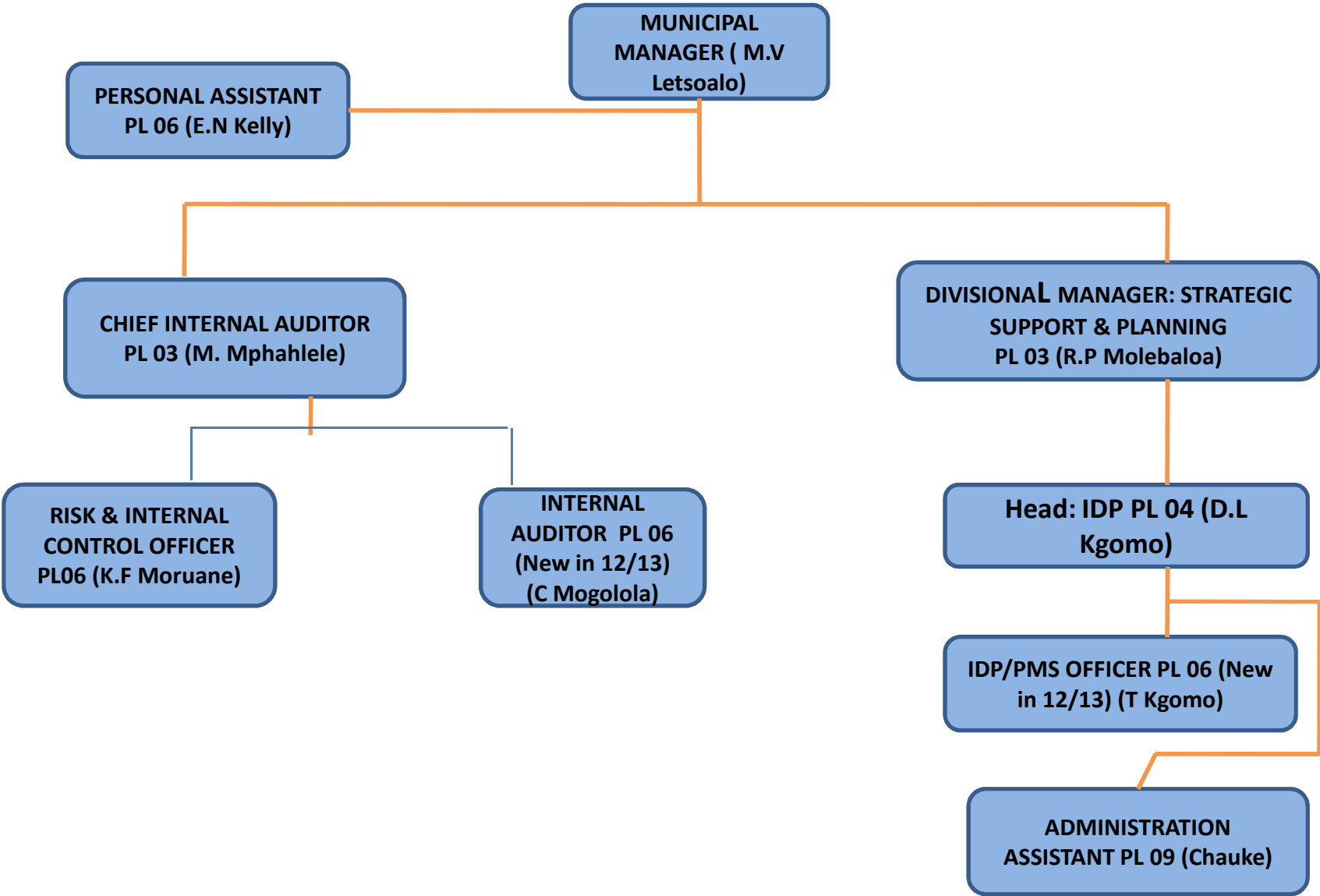
## **ORGANISATIONAL STRUCTURE**

### **implementation status in 13/14 budget**

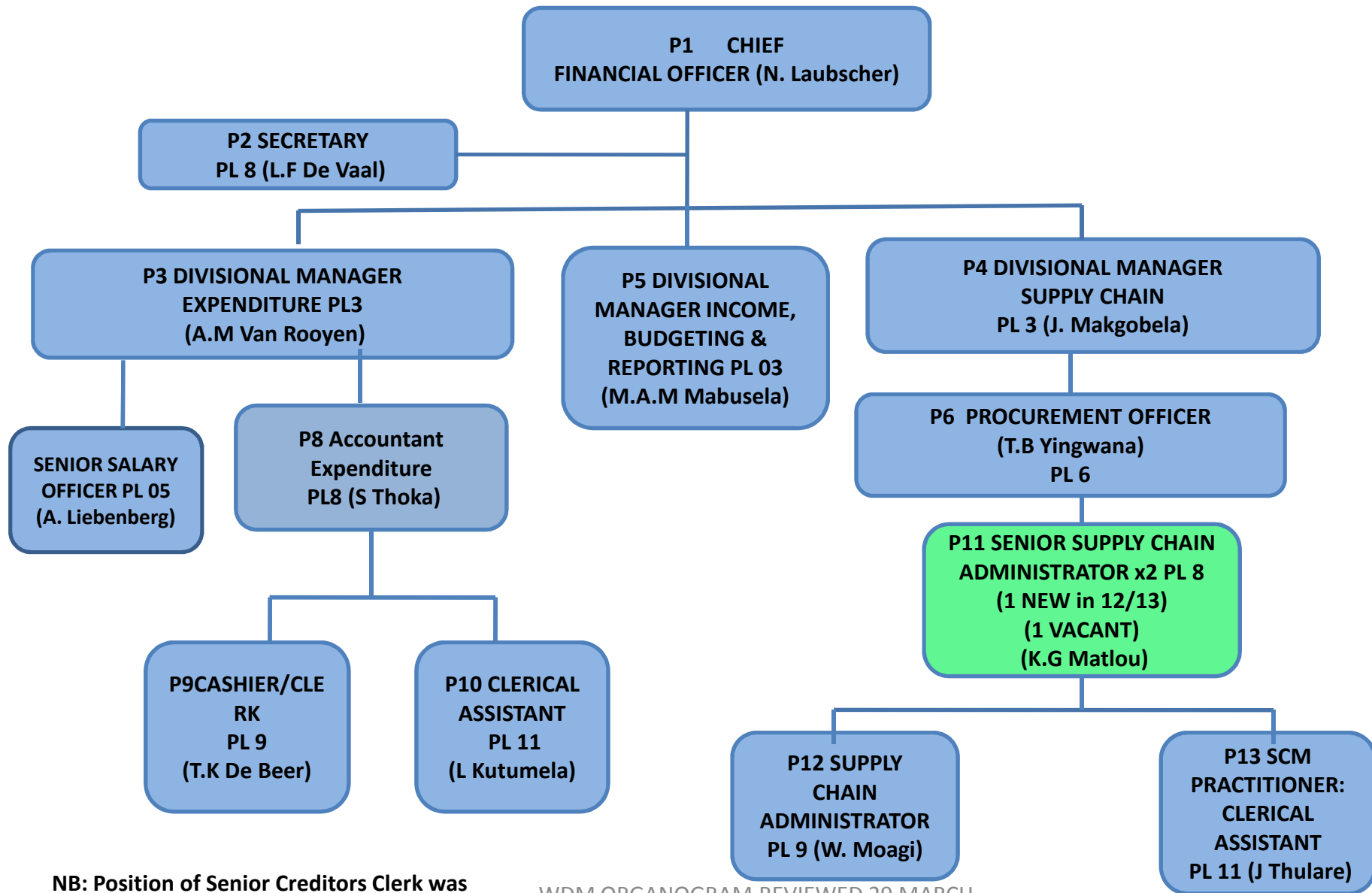
## ORGANISATIONAL STRUCTURE REVIEWED 29 MARCH 2012



**OFFICE OF THE MUNICIPAL MANAGER**



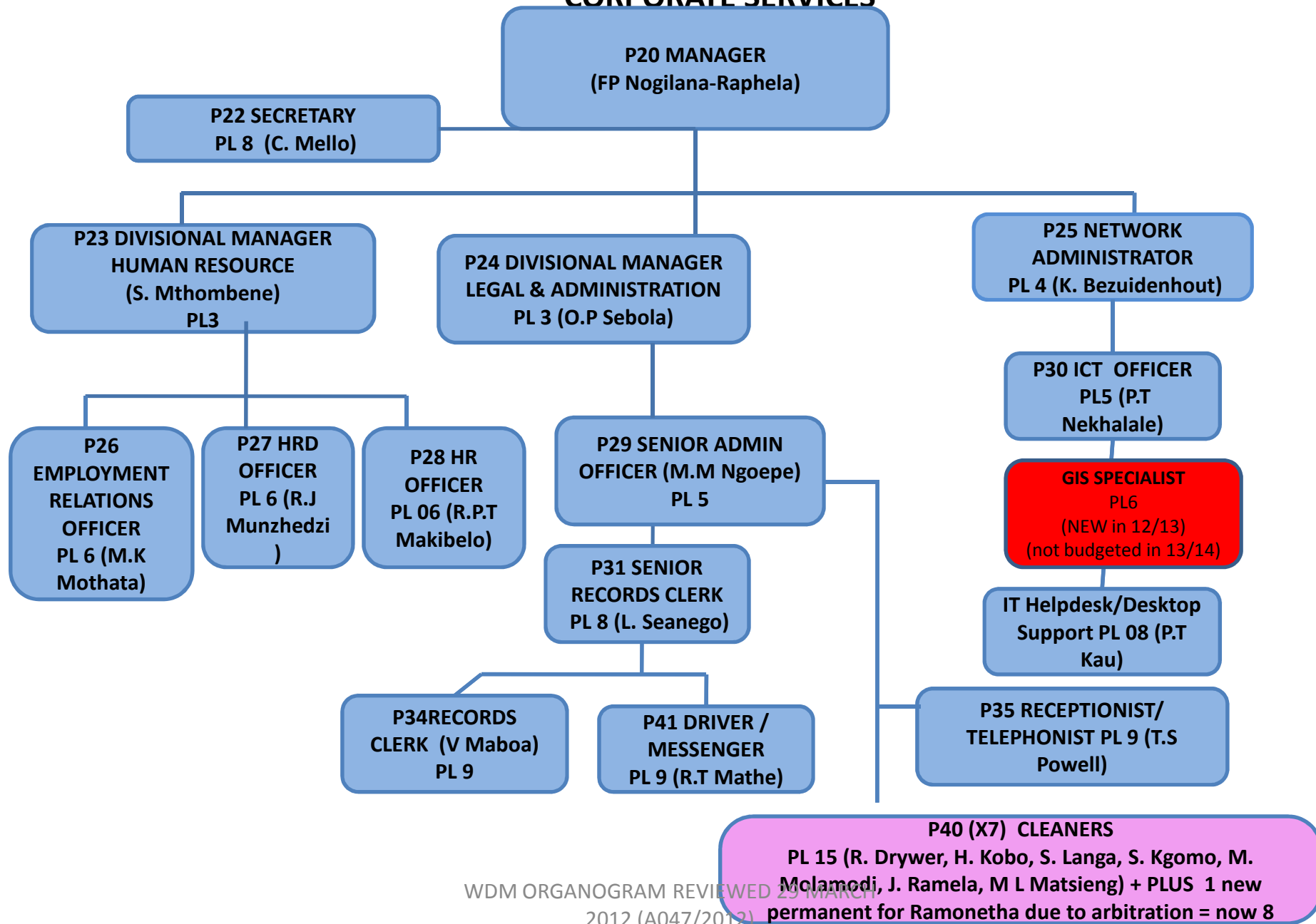
# BUDGET AND TREASURY OFFICE



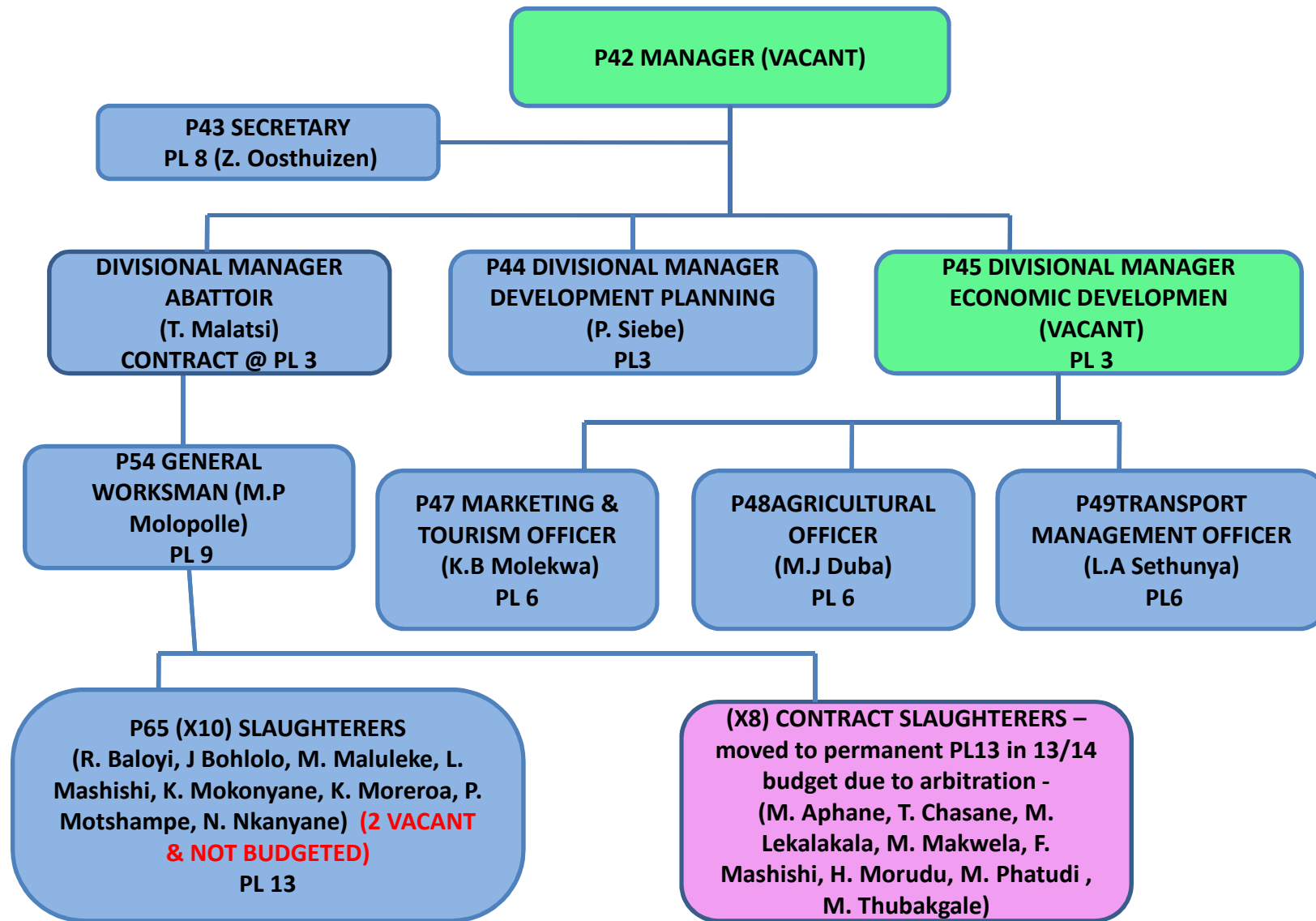
**NB: Position of Senior Creditors Clerk was changed to Accountant Expenditure**

WDM ORGANOGRAM REVIEWED 29 MARCH  
2012 (A047/2012)

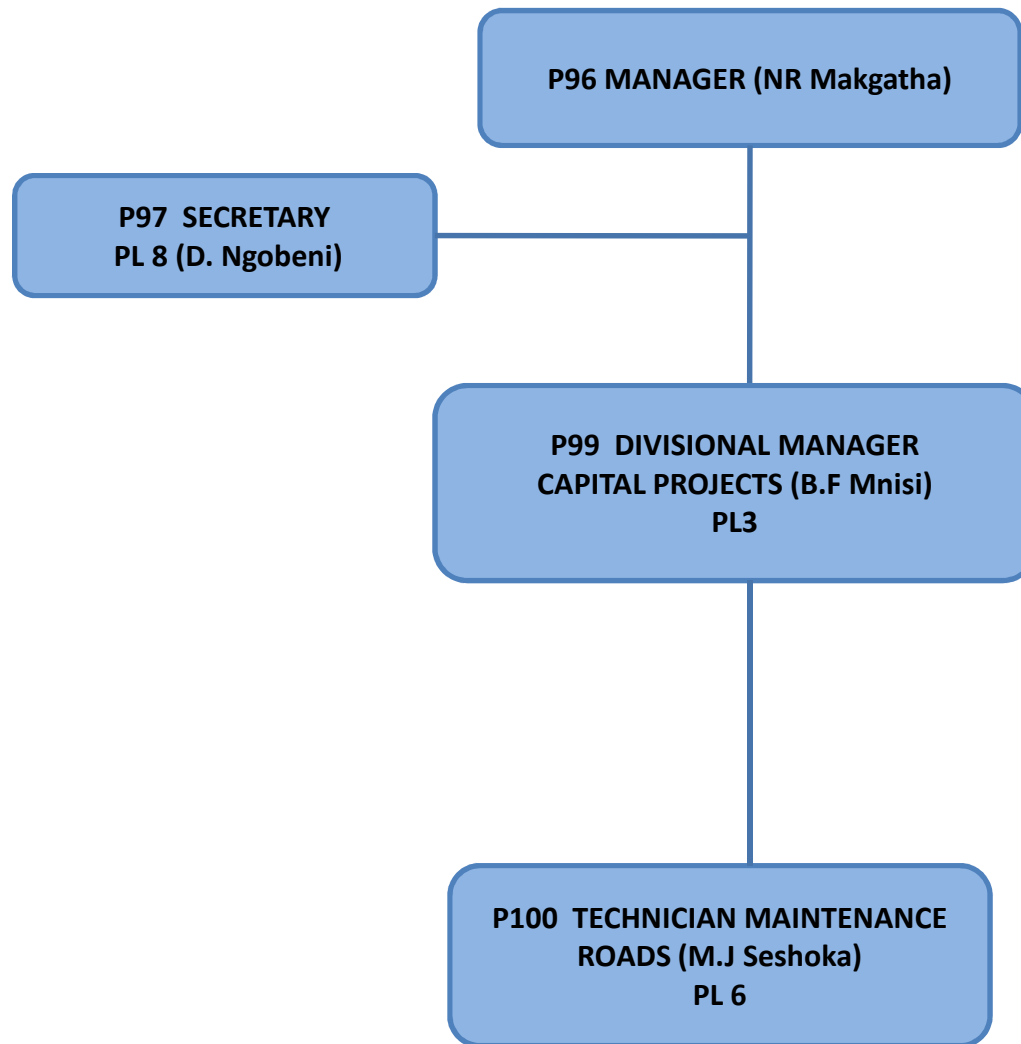
# CORPORATE SERVICES



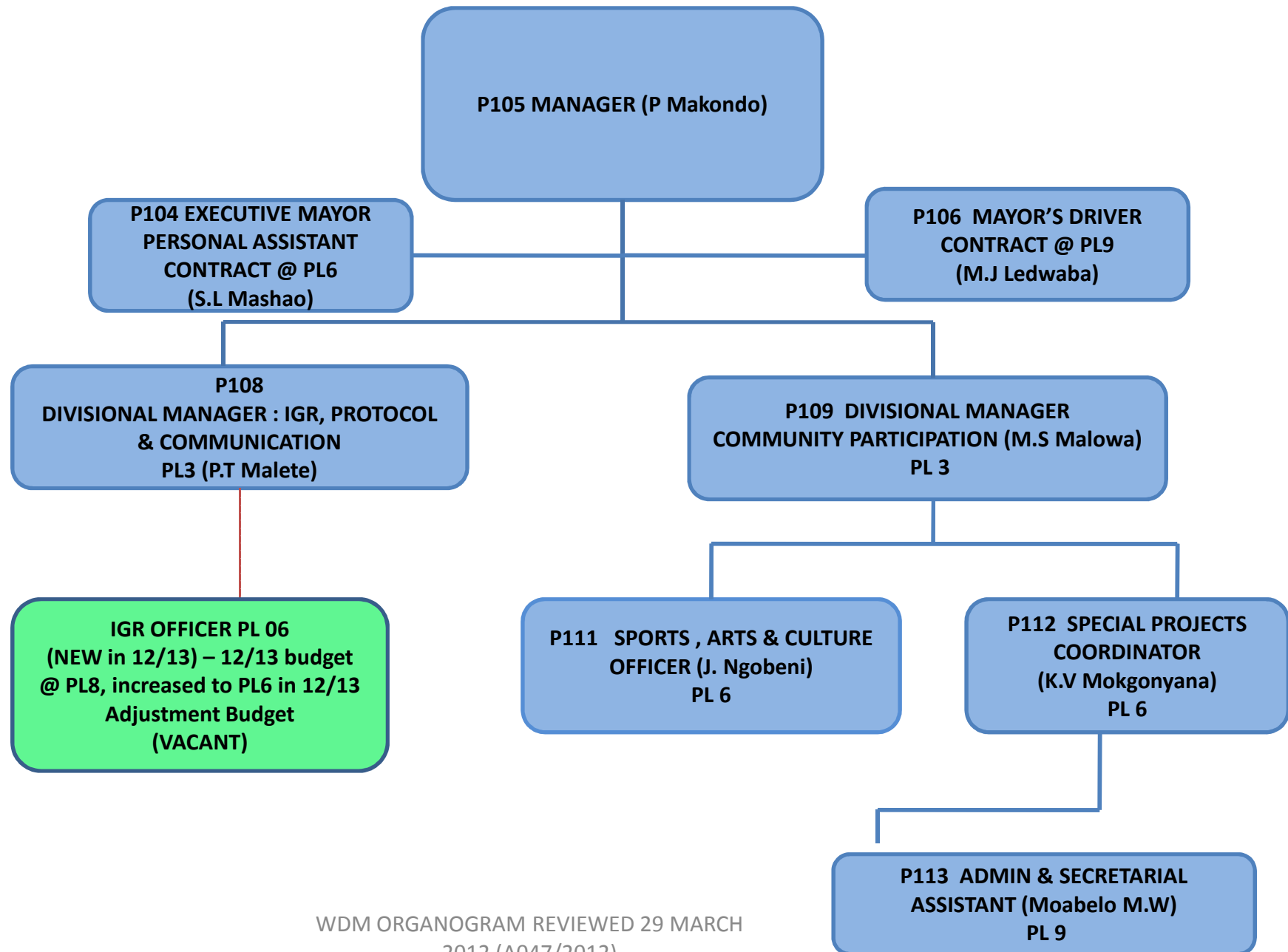
## PLANNING & ECONOMIC DEVELOPMENT



## INFRASTRUCTURE DEVELOPMENT

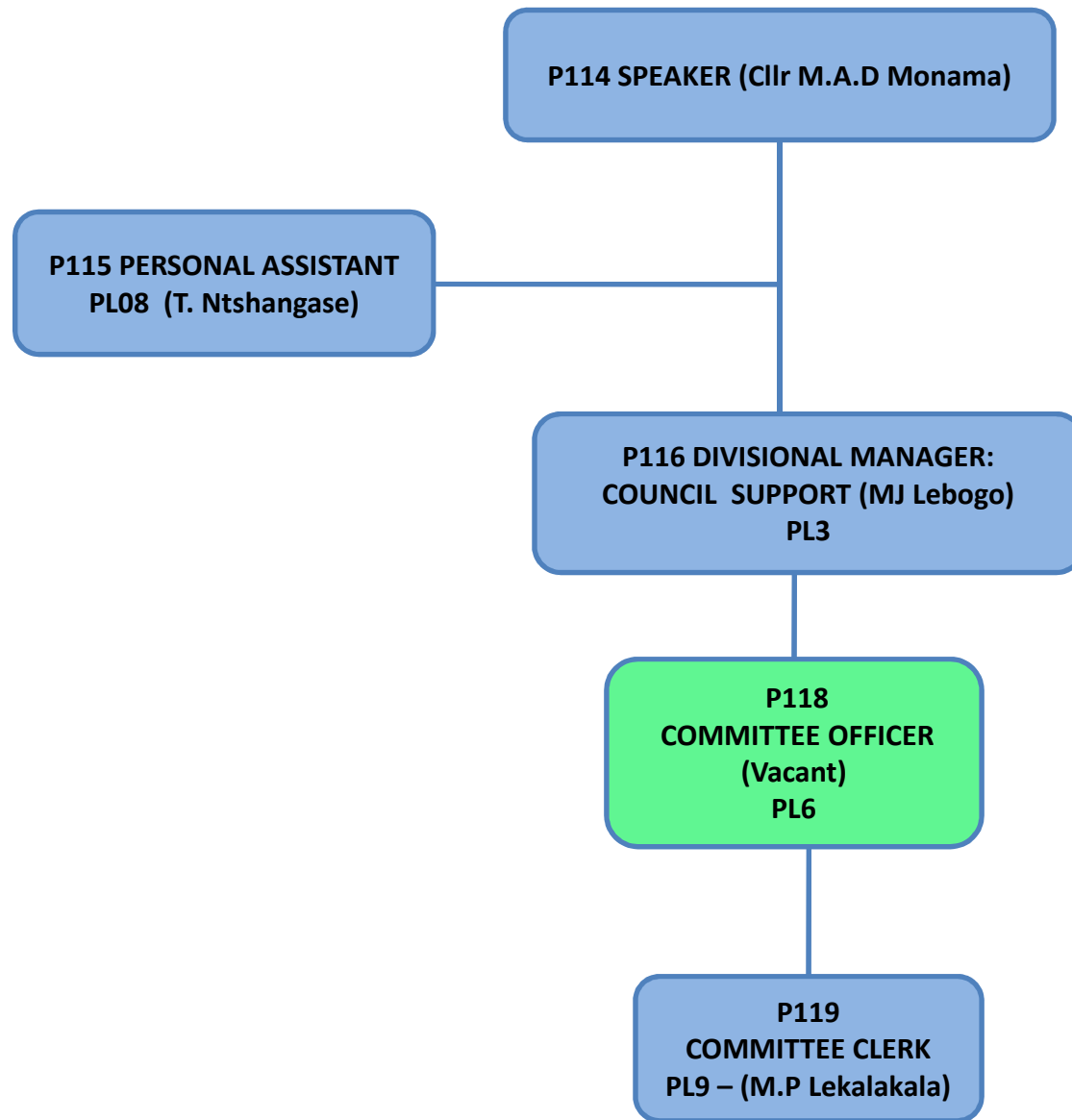


## EXECUTIVE SUPPORT OFFICE

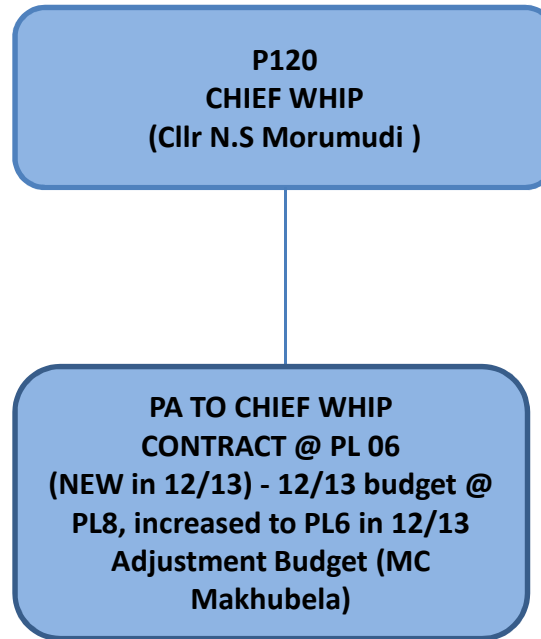




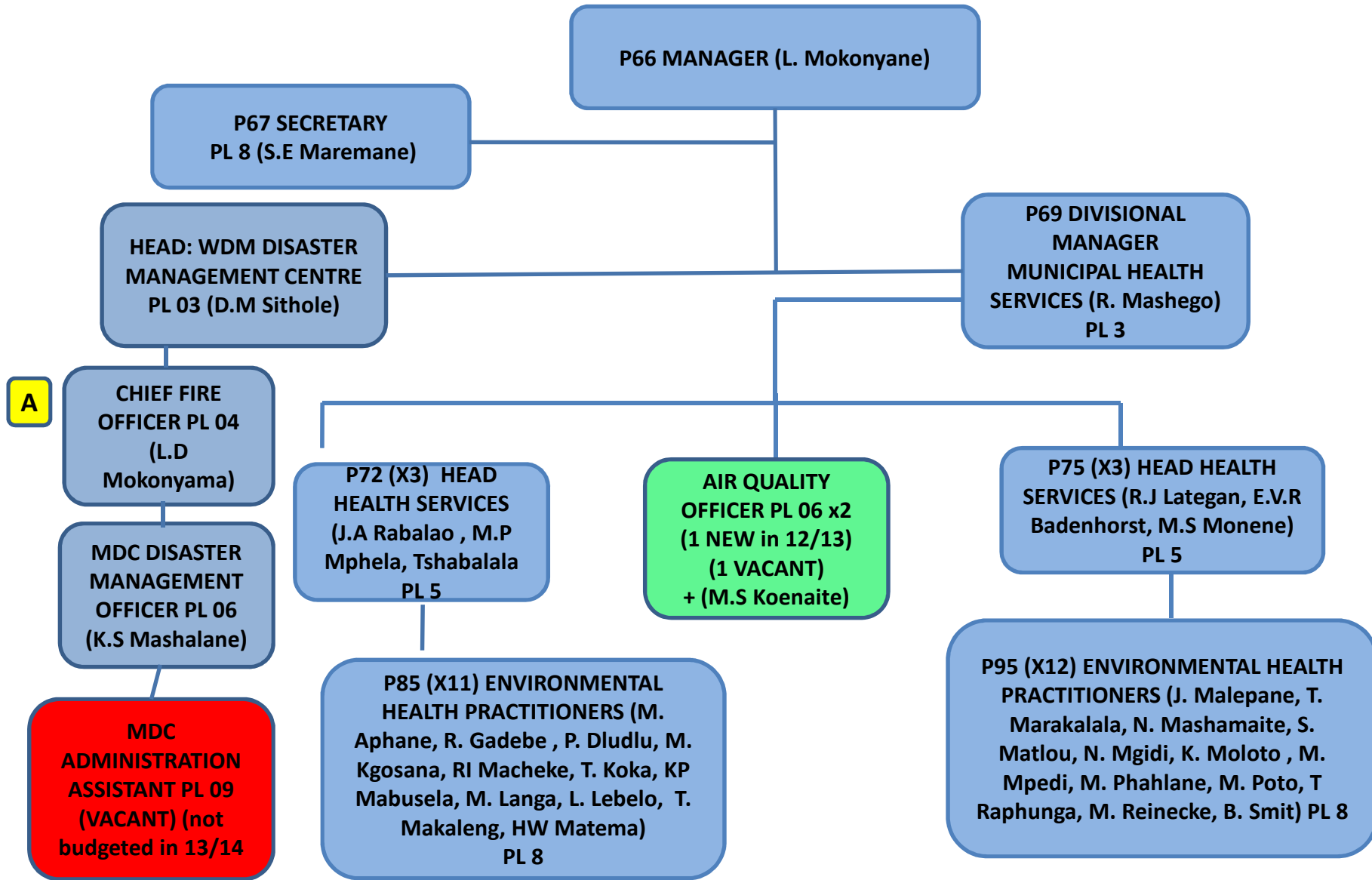
## OFFICE OF THE SPEAKER



## OFFICE OF THE CHIEF WHIP

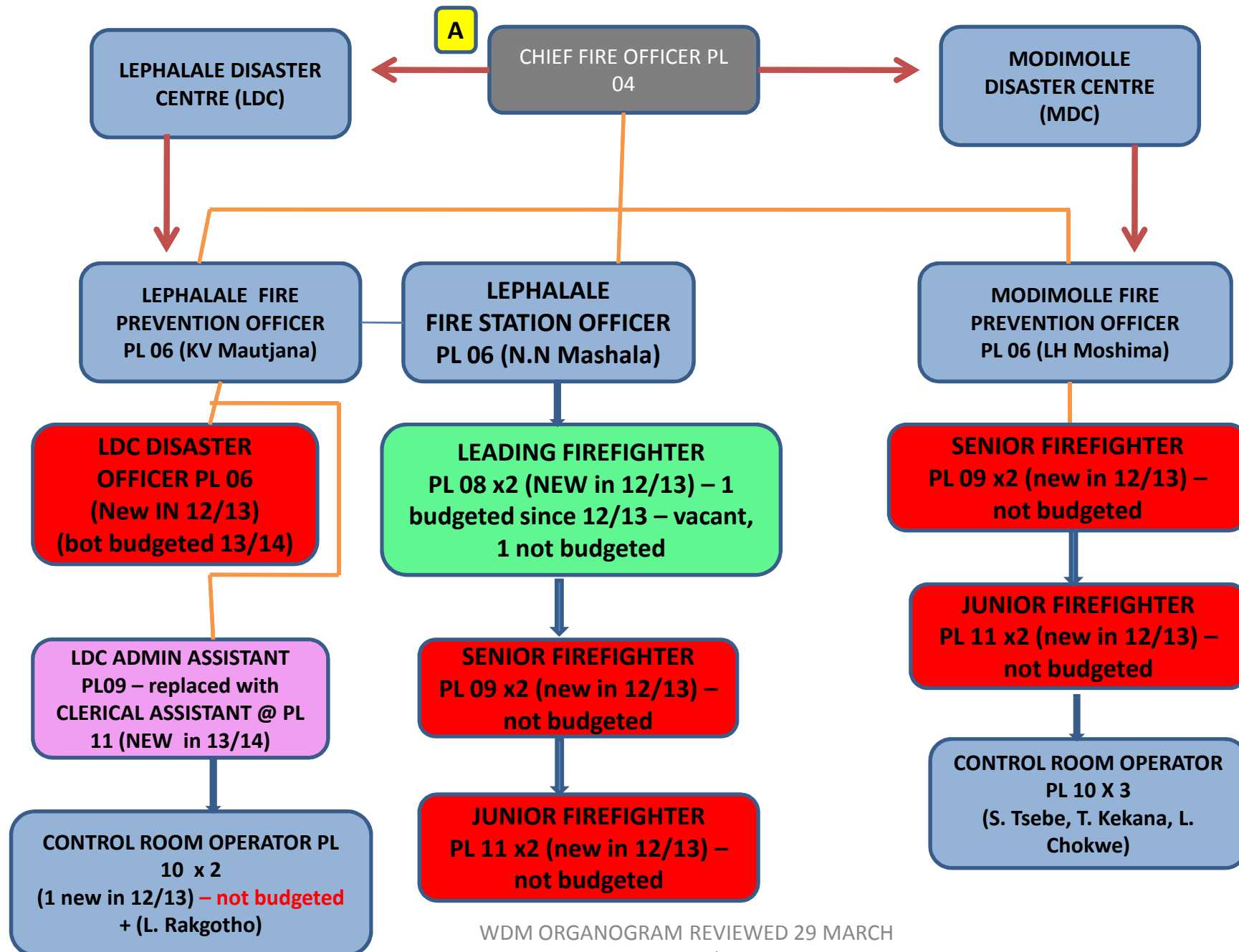


## SOCIAL DEVELOPMENT AND COMMUNITY SERVICES



WDM ORGANOGRAM REVIEWED 29 MARCH  
2012 (A047/2012)

**MDC = Modimolle Disaster Centre**  
**LDC = Lephalale Disaster Centre**



WDM ORGANOGRAM REVIEWED 29 MARCH  
2012 (A047/2012)

